



WIRELESS 450N DUAL BAND USB 2.0 ADAPTER



**Quick Installation Guide
DN-70650**

Table of Contents

Package Contents.....	Page 1
Network Card Installation.....	Page 2
Connect to Wireless Access Point.....	Page 5

Package Contents

Before you start to use this wireless network card, please check if there's anything missing in the package, and contact your dealer of purchase to claim for missing items:

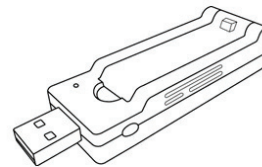
- USB Wireless Network Card (1 pcs) 1
- Quick installation guide (1 pcs) 2
- Driver/Utility/User Manual CD-ROM (1 pcs) 3



3



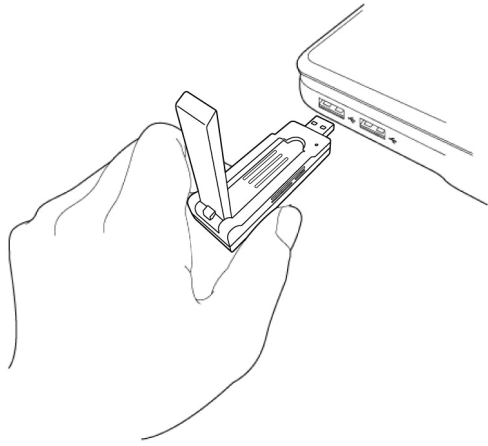
2



1

Network Card Installation

Please follow the following instructions to install your new USB wireless network card.



1. Insert the USB wireless network card into an empty USB 2.0 port of your computer when computer is switched on.

Never use force to insert the card, if you feel it's stuck, flip the card over and try again.

Found New Hardware Wizard



Welcome to the Found New Hardware Wizard

Windows will search for current and updated software by looking on your computer, on the hardware installation CD, or on the Windows Update Web site (with your permission).

[Read our privacy policy](#)

Can Windows connect to Windows Update to search for software?

- Yes, this time only
 Yes, now and every time I connect a device
 No, not this time

Click Next to continue.

< Back Next > Cancel

2. The following message will appear on your computer, click 'Cancel'.

Ralink Wireless LAN - InstallShield Wizard

License Agreement

Please read the following license agreement carefully.

RALINK Wireless Utility for Windows 2000/XP/Vista/Win7
Copyright (C) RALINK TECHNOLOGY, CORP. All Rights Reserved.

Thank you for purchasing RALINK Wireless product!

SOFTWARE PRODUCT LICENSE
The SOFTWARE PRODUCT is protected by copyright laws and international copyright treaties, as well as other intellectual property laws and treaties. The SOFTWARE PRODUCT is licensed, not sold.

1. GRANT OF LICENSE. This End-User License Agreement grants you the following rights: Installation and Use. You may install and use an unlimited number of copies of the SOFTWARE PRODUCT.

Reproduction and Distribution. You may reproduce and distribute an unlimited number of copies of the SOFTWARE PRODUCT; provided that each copy shall be a true and complete copy, including all copyright and trademark notices, and shall be accompanied by a copy of this EULA. Copies of the SOFTWARE PRODUCT may be distributed as a standalone product or included with your own product.

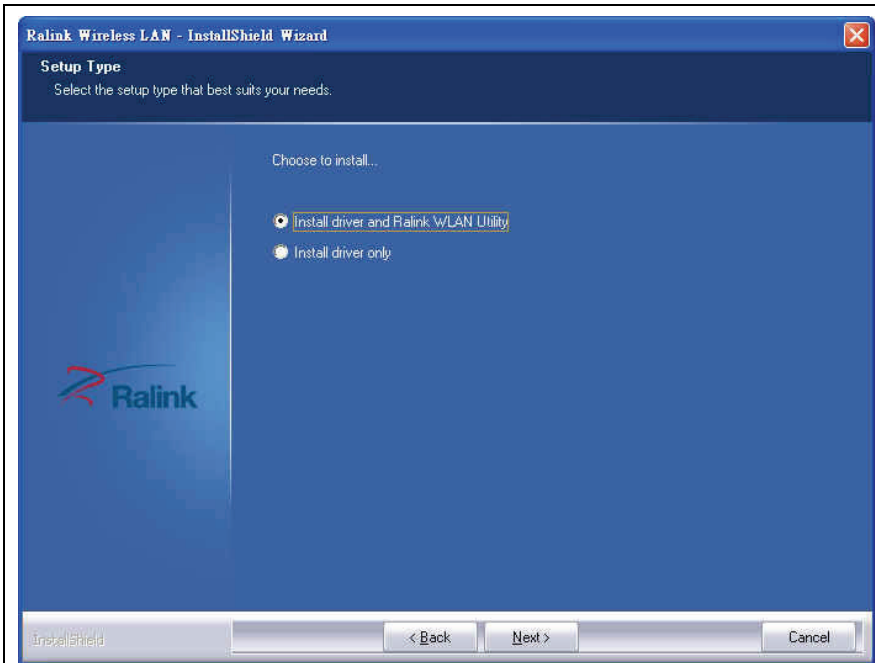
- I accept the terms of the license agreement
 I do not accept the terms of the license agreement

Print

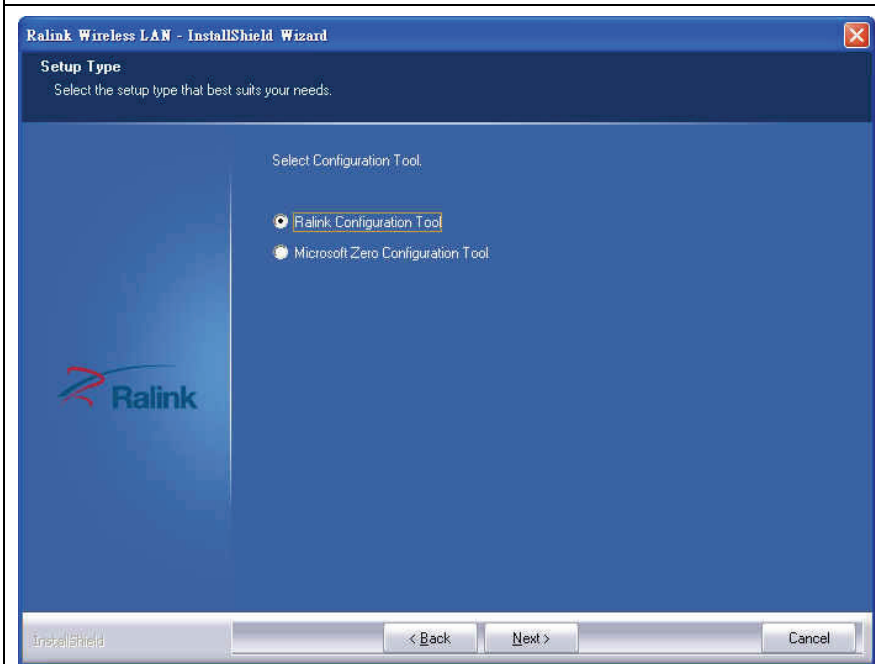
InstallShield

< Back Next > Cancel

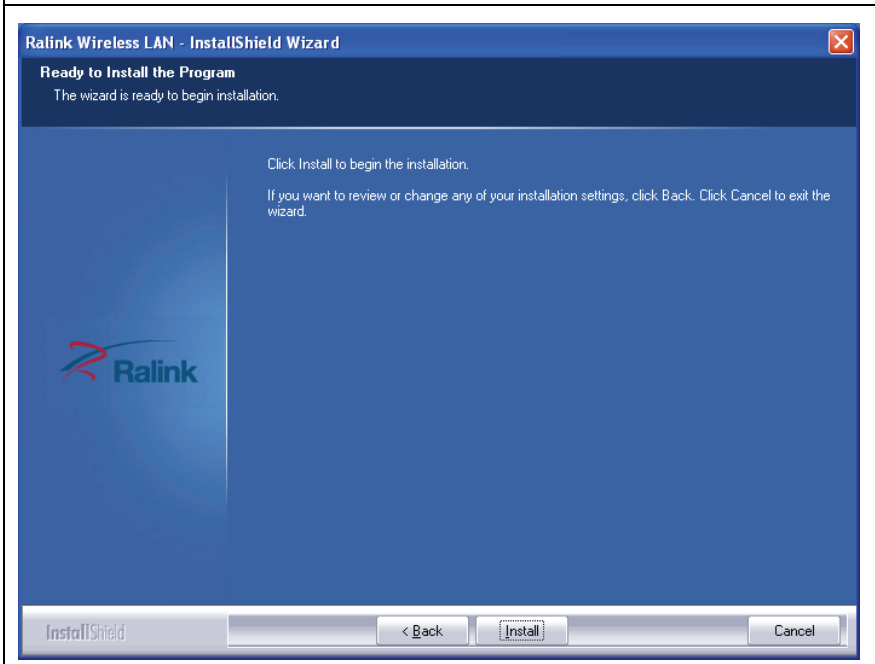
3. Insert device driver CD-ROM into the CD/DVD ROM drive of your computer, and execute 'Setup.exe' program. Please read the end user license agreement and click 'I accept the terms of the license agreement' and 'Next' to accept license agreement.



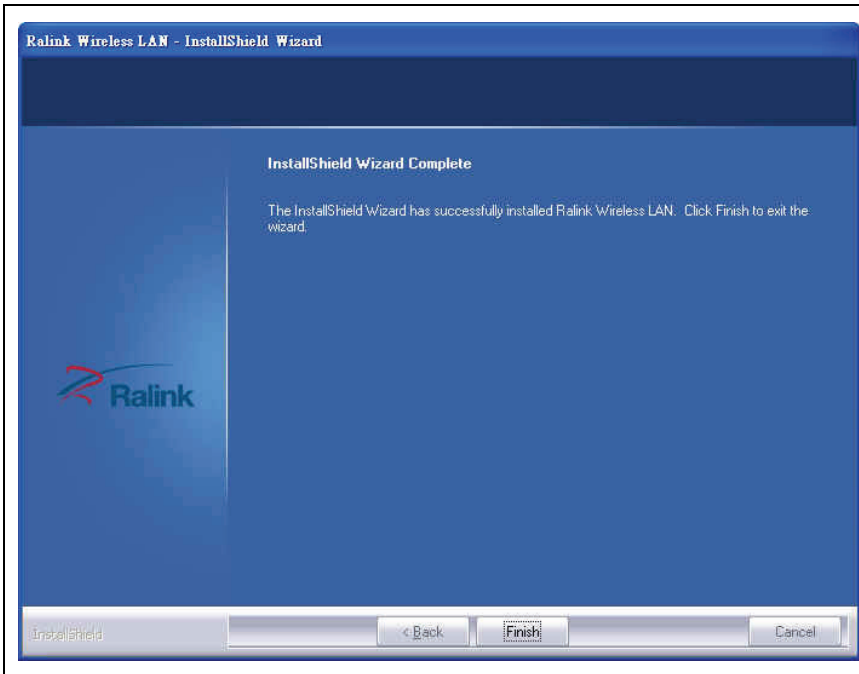
4. It is recommend installing driver and utility if the network card is installing the first time. If you want to update the driver only, choose 'Install driver only'. Click 'Next' to continue.



5. You can choose the configuration tool used to configure the wireless network card here. It's recommended to select 'Ralink Configuration Tool', which provides fully access to all functions of this wireless network card. If you prefer to use the wireless configuration tool provided by Windows XP, Vista or 7, please select 'Microsoft Zero Configuration Tool' then click 'Next'.



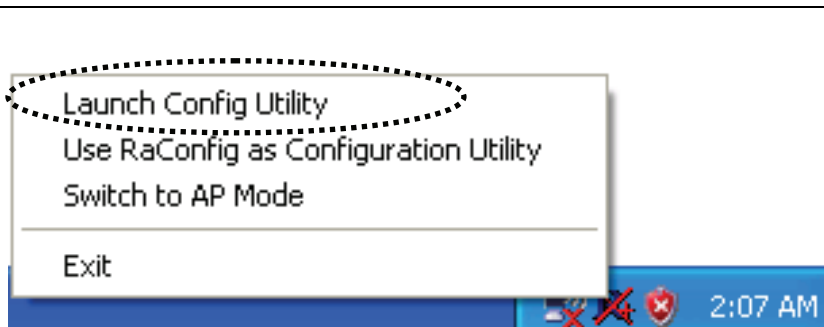
6. Now you'll see the following message, please click 'Install' to begin the installation. **If you see 'Found New Hardware' message again, please ignore it and wait.**



7. Please wait while the install procedure is running. When you see this message, please click 'Finish' to complete the installation process.


Connect to Wireless Access Point


Using Configuration Utility to Connect to Wireless Access Point:



1. After installation is complete, wireless configuration utility will be shown in the desktop of your computer automatically. You will also see an icon at the lower-right corner of your windows system. You can click the icon by right mouse key, and select the configuration utility you want to use or switch the network card to AP mode.

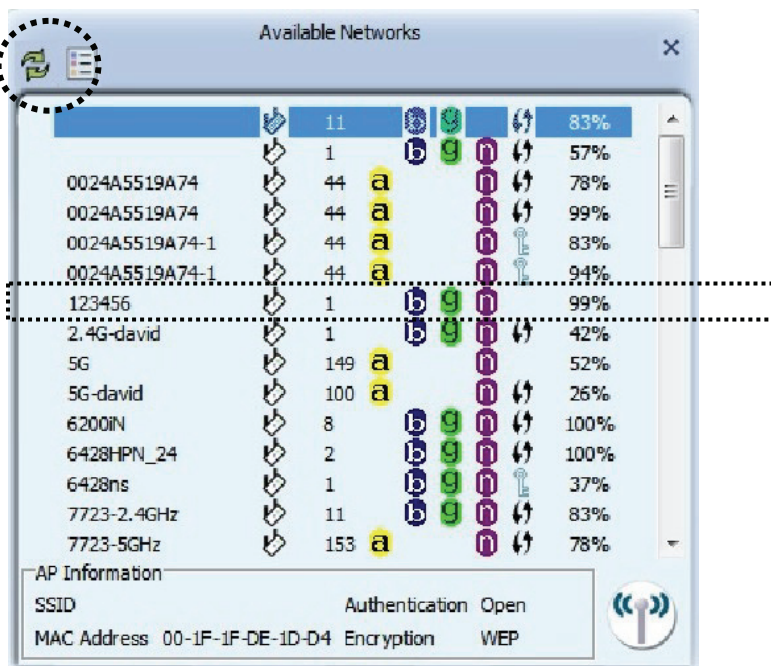


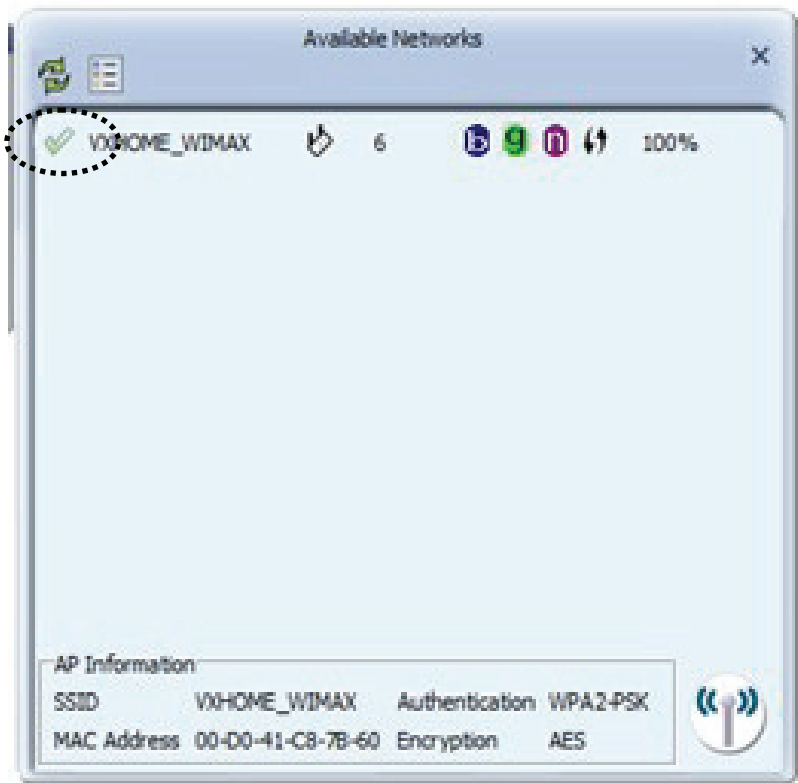
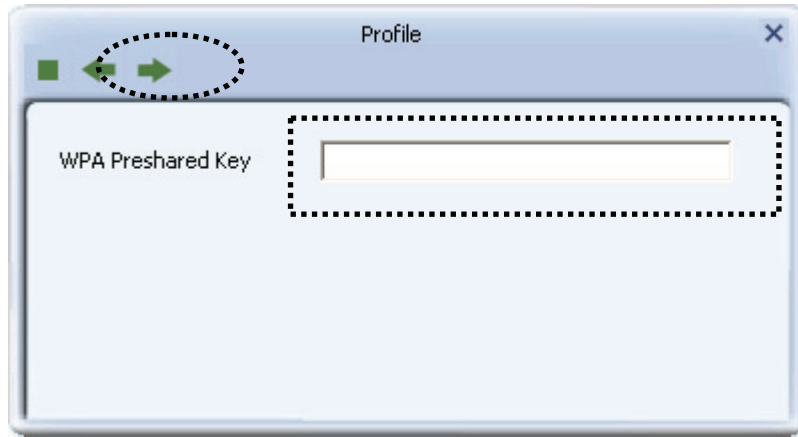
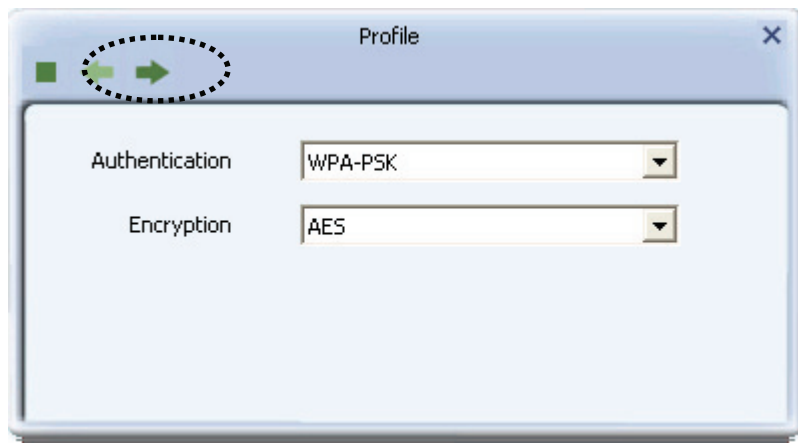
2. Click 'Site Survey'  button to open the list of available wireless networks (and their status).

If the wireless access point you wish to connect does not appear here, you can click 'Refresh'  button to scan for wireless access points again.

To connect to a wireless access point, double click on it.

NOTE: In Vista, the network card will not connect to any unencrypted wireless access point automatically.

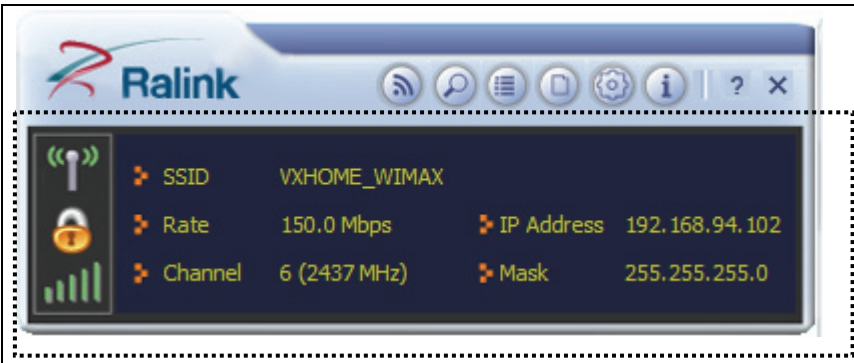




3. If the wireless access point uses encryption, you have to input WEP key or WPA preshared key. Click right arrow to continue. Generally you don't have to change encryption method, it will be detected automatically.

Please input encryption key (or passphrase, depends on encryption method) here, then click right arrow. If the value you inputted here is wrong, you will not be able to connect to wireless access point.

4. When you see there's a check symbol shown beside the access point you wish to connect, your computer is connected to access point you selected.



The connection status will be displayed in configuration utility also.

For advanced settings and other features of this USB wireless network card, please refer to user manual enclosed in supplied CD-ROM.

